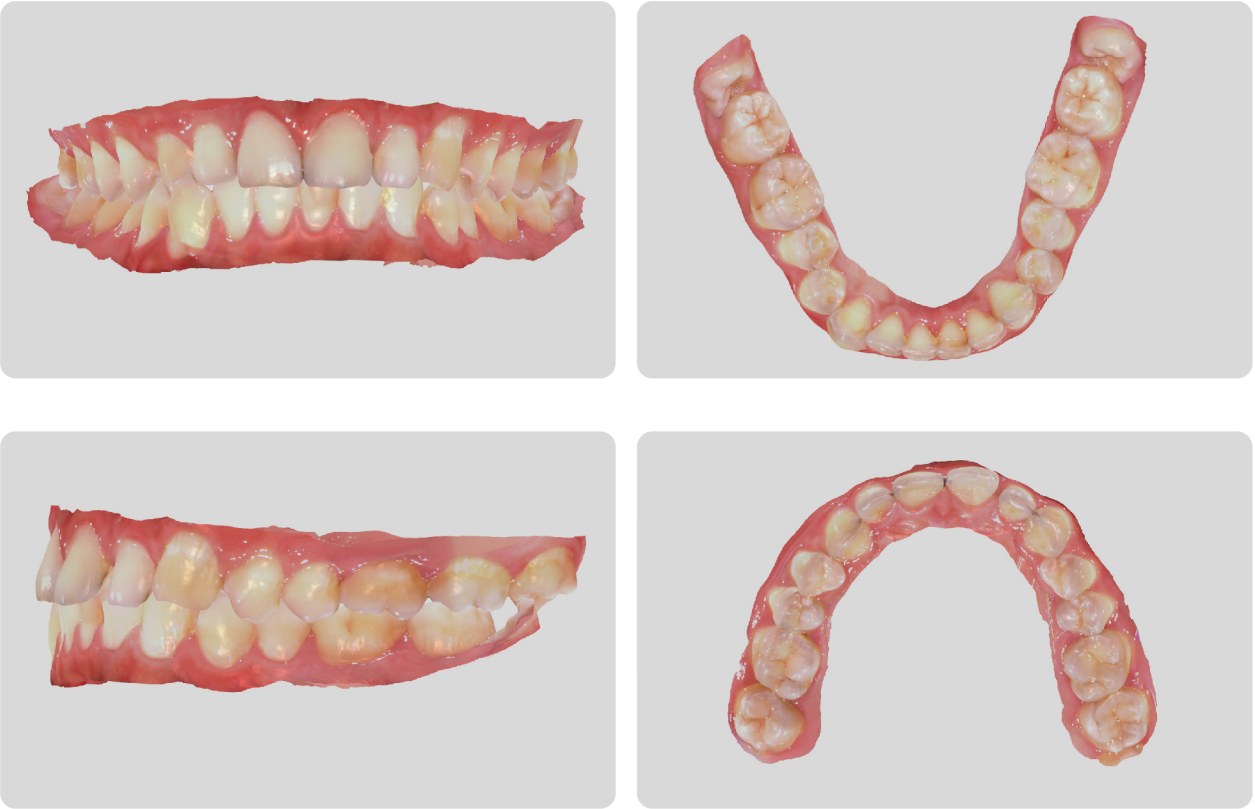


Scanning Performance



Technical Specifications

Dimension (L*W*H)	237*46*39mm
Weight	245g
Imaging Technology (Pictures/videos)	Videos
Standard Scanning Head	93*20*17.5mm
Small Scanning Head	93*17*14mm
Scan Depth	15mm
Anti-fogging Technology	Built-in Automatic Anti-fogging
Full Oral Scan Speed	3min
Quick Reset Function	Yes
Scan Accuracy	Superior to 15μm
File Output Format	STL, PLY, OBJ
One-click Calibration	Yes

Meyer, Your Assured Choice

- Hefei Meyer Optoelectronic Technology Inc.

**Address(manufacturing site)**  
No.668 Wangjiang West Road, Hefei High&New Tech Zone, Hefei, Anhui, P.R.China

**Mailbox**  
sales@meyer-corp.com

**Website**  
www.meyer-medical.net



Meyer Intraoral Scanner





# Meyer Intraoral Scanner



**Self-development, Green Design**  
The appearance is inspired by high speed rail with smooth and beautiful curves, more aesthetic



Accurate data fusion,  
helping dental digital diagnosis and treatment



+



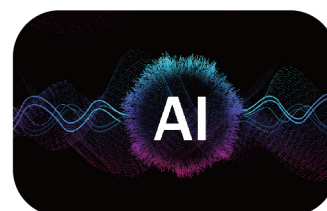
(Bone 3D data + Dental 3D data)

**Data Fusion**  
With excellent acquisition capability of the dental 3D data, combined with the bone 3D data from Meyer Dental CBCT, through the intelligent and accurate data fusion of the accompanying software, more clinical information can be effectively obtained and the value of the data can be deeply explored

## Five Highlights

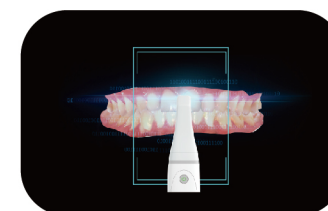


**Efficiency**  
**Efficient Communication**  
Real-time illustration of intraoral real-color data, integrated with multiple functions and tools  
Facilitate dentist-patient communication and dentist-technician collaboration  
**Efficient Scanning**  
Unique MOS video-type scanning technology, significantly improving scanning speed (full mouth scan for 3min)

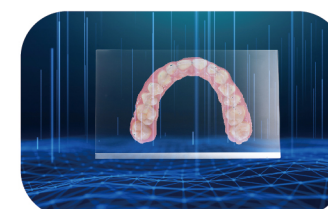


**Intelligence**  
**Intelligent Image Processing**  
Apply AI processing technology to effectively remove soft tissue interference  
**One-click Calibration**  
Equipped with a fully automatic calibrator to achieve intelligent one-key calibration and avoid complicated operations  
**Somatosensory Operation**  
Support intelligent somatosensory operation, according to the action to trigger the device to open/close the function, unlocking the new experience of digital mold taking

**Stability**  
**Smooth Scanning**  
Apply dynamic scanning and the new generation of data processing technology to avoid the interference of invalid data in the scanning process, making the scanning process more smooth  
**Stable Imaging**  
Incorporate new intelligent thermal management technology to ensure stable and accuracy imaging



**Accuracy**  
**Accurate Data**  
Using the precise algorithm and high-definition texture display technology to ensure high-precision true color imaging (scanning accuracy better than 15μm)



**Portability**  
**Comfortable to Hold**  
Portable design (host about 245g), ergonomic and comfortable in the hand  
**Easy to Learn and Use**  
Equipped with specialized software, modular interface design, step-by-step operation guidance  
Novices can easily operate  
**Flexible Operation**  
Equipped with a special scanning head for children to solve the scanning pain point of low openness, meeting different clinical needs



## One-piece Workstation of Intraoral Scanning

**Digital Clinic Must-have**  
More convenient and reliable medical assistant, a variety of configurations can be chosen

- **Configuration I**  
MeyerScan Intraoral Scanner (equipment only)
- **Configuration II**  
MeyerScan Intraoral Scanner + Customized Laptop
- **Configuration III**  
MeyerScan Intraoral Scanner + One-piece Workstation of Intraoral Scanning (Touchscreen)  
(Dimensions 560mm\*560mm\*1380mm, Weights 28kg)

